



# Window Pods® 2.0 Installation Ford Transit Custom

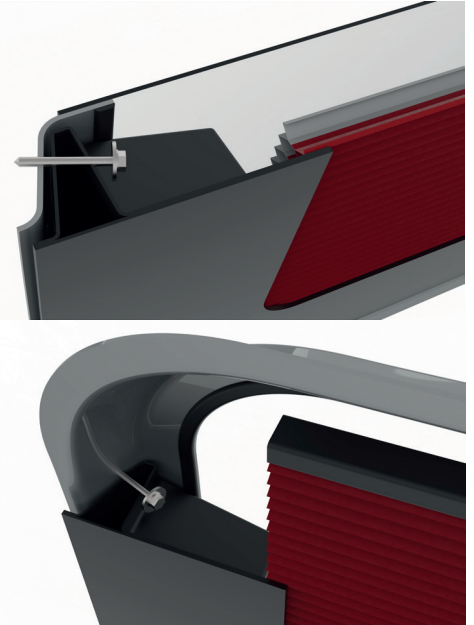
Your Window Pods® are supplied pre-assembled and ready for you to install. There is no need to alter the product if you have ordered correctly. If you have any concerns, please go to our website to view our installation guides.

If your Window Pods® have been supplied naked, we recommend that they are carpeted prior to fitting. We suggest that the face of the Window Pod® is carpeted and wrapped around the rear forming a 1" overlap round the outer edges of the frame and the inside of the aperture. This eliminates any chance of the blind rattling against the plastic when you are driving. An instructional video on how to carpet correctly can be found on our website [vanshades.co.uk](http://vanshades.co.uk).

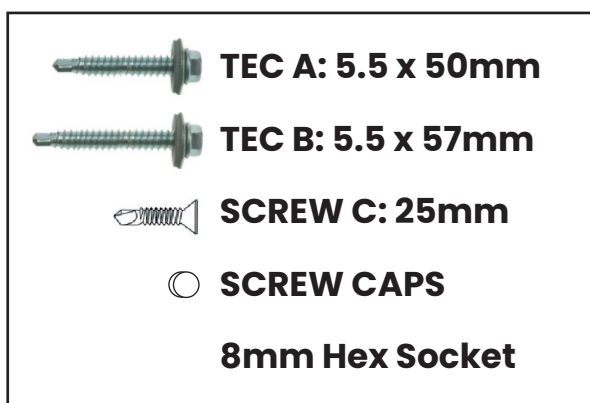
Window Pods® are designed with ease of fitting in mind; however, you may find it easier with an extra pair of hands to hold the product in place while you screw in the provided fixings.

**IMPORTANT:** When unboxing your Window Pods® do not use a blade as you may sever the cords which suspend the blind. Once your products are out of the box check that the blind handle is central to the frame; you may need to centralise this if it is out of alignment. On most Window Pods® you can move the top rail of the blind which is fixed into the Window Pod® with a small amount of pressure.

Even though great care is taken into preventing this from happening, we often cannot control the conditions in which the product is transported. It is important that the fixings are not over tightened, as this can pull the Window Pod® in too close and warp the plastic over time. If you have over tightened any of the fixings, just back them off slightly before finishing off the installation.



**CAUTION:** Fixings should be perpendicular to the steel window recess to avoid any 'drill wander' when installing the product. This is easiest when fixing the screws as close to the glass as possible.



Please take care when drilling through the steel of your vehicle paying particular attention to any **hidden electrical wires**. Vanshades cannot be held responsible for any damage to your vehicle as a result of installing Window Pods.

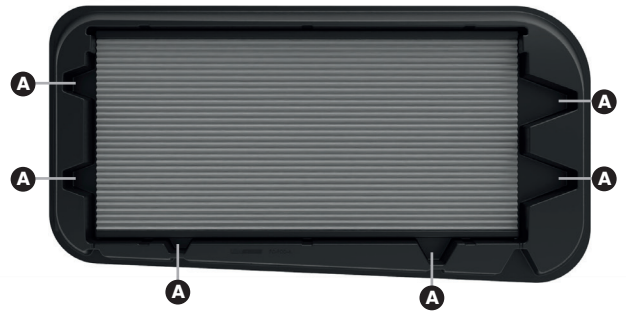
**Tools Required:** Drill Driver

## Window Pods: A

Behind the driver – fixed or sliding window



1. Place the Window Pod® in the window recess and ensure that it is pushed up so that there is no gap between the top of the Window Pod® and the window recess.
2. CAUTION: Fixings should be perpendicular to the steel window recess to avoid any 'drill wander' when installing the product. This is easiest when fixing the screws as close to the glass as possible.
3. Secure the TEC A screws in the positions highlighted on the diagram taking care not to overtighten.
4. If necessary, tighten up all fixings until the washer is touching the plastic of the Window Pod® and secure the provided screw caps.

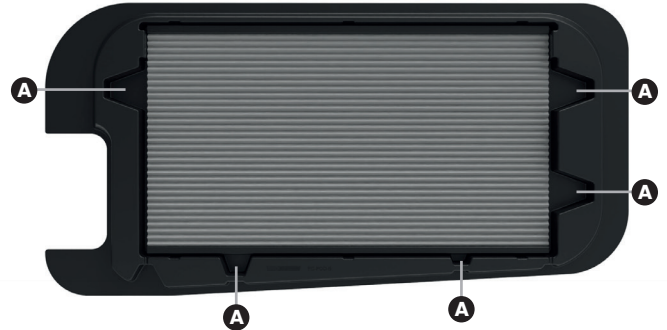


## Window Pods: B & L

Sliding doors – fixed or sliding window



1. From the inside of the vehicle, open the sliding door slightly.
2. Place the Window Pod® in the window recess and close the door with the Window Pod® in place.
3. CAUTION: Fixings should be perpendicular to the steel window recess to avoid any 'drill wander' when installing the product. This is easiest when fixing the screws as close to the glass as possible.
4. Secure the TEC A screws in the positions highlighted on the diagram taking care not to overtighten.
5. If necessary, tighten up all fixings until the washer is touching the plastic of the Window Pod® and secure the provided screw caps.

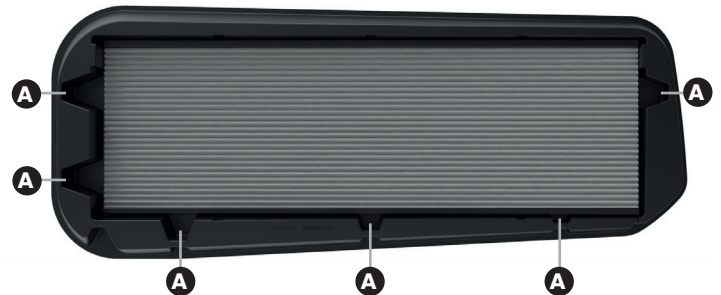


## Window Pods: D & E

Long wheel base rear quarters



1. Place the Window Pod® in the window recess and ensure that it is pushed up so that there is no gap between the top of the Window Pod® and the window recess.
2. CAUTION: Fixings should be perpendicular to the steel window recess to avoid any 'drill wander' when installing the product. This is easiest when fixing the screws as close to the glass as possible.
3. Secure the TEC A screws in the positions highlighted on the diagram taking care not to overtighten.
4. If necessary, tighten up all fixings until the washer is touching the plastic of the Window Pod® and secure the provided screw caps.



## Window Pods: C (PAIR)

Barn doors



1. Starting with the barn doors in the open position, place a Window Pod® in one of the window recesses.
2. When fitting the Window Pod® it should be pushed up towards the top of the door. You may find this process easier with an extra pair hands or a clamp to hold the Window Pod® in place.
2. CAUTION: Fixings should be perpendicular to the steel window recess to avoid any 'drill wander' when installing the product. This is easiest when fixing the screws as close to the glass as possible.
3. If your Window Pod® is carpeted, we recommend blind fixing the smallest screw. To do this simply make a small incision in the carpet on the face of the Window Pod® using a retractable utility blade and peel a small section of carpet back before fixing the screw.
4. If necessary, tighten up all fixings until the washer is touching the plastic of the Window Pod® and secure the provided screw caps.

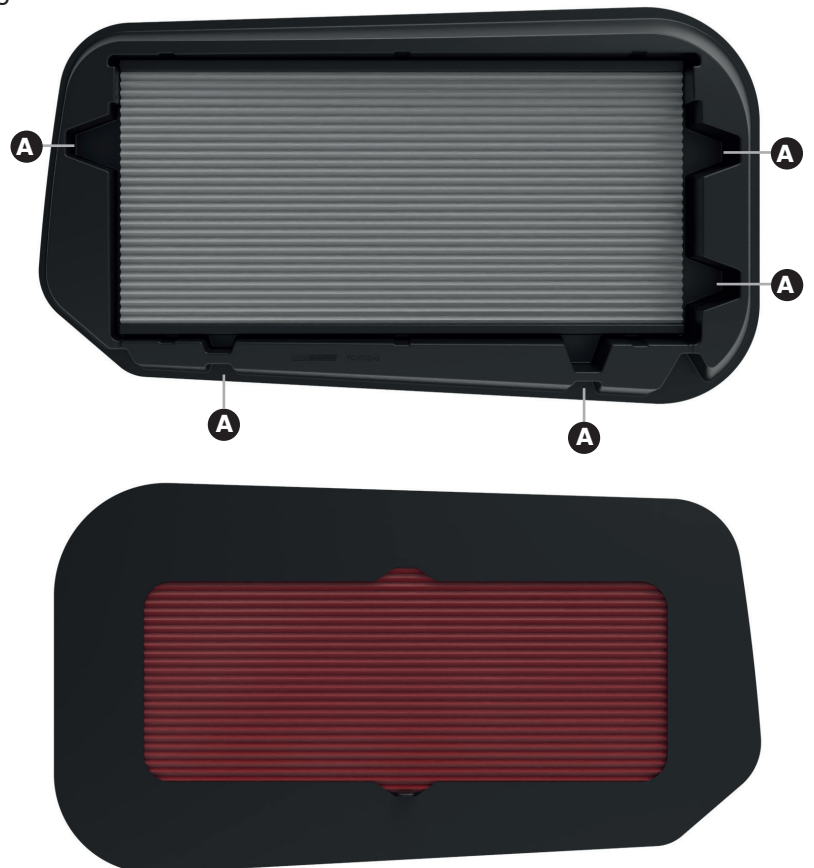


## Window Pods: G & H

Short wheel base rear quarters



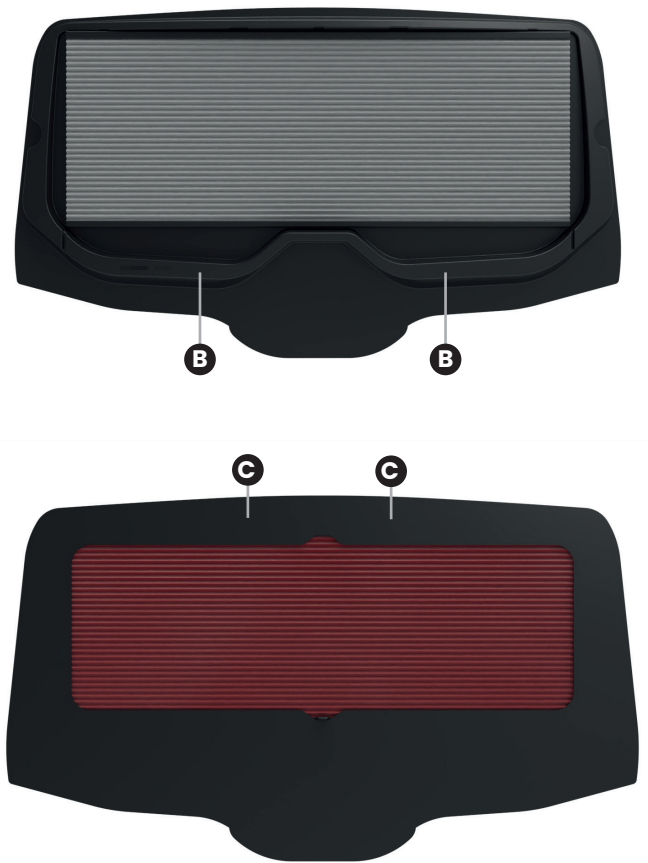
1. Place the Window Pod® in the window recess and ensure that it is pushed up so that there is no gap between the top of the Window Pod® and the window recess.
2. CAUTION: Fixings should be perpendicular to the steel window recess to avoid any 'drill wander' when installing the product. This is easiest when fixing the screws as close to the glass as possible.
3. Secure the TEC A screws in the positions highlighted on the diagram taking care not to overtighten.
4. If necessary, tighten up all fixings until the washer is touching the plastic of the Window Pod® and secure the provided screw caps.



## Window Pod: I

1. If your vehicle has room for you at the rear, this Window Pod® can be fitted with the tailgate in the open position. If this isn't possible, go to step 3.
2. If you are fitting the Window Pod® with the tailgate in the open position, you may find it easier to have someone to help hold the product in place initially. An alternative is to use a plasterboard support.
3. Place the Window Pod® in the window recess and ensure that it is central to the tailgate.
4. CAUTION: Fixings should be perpendicular to the steel window recess to avoid any 'drill wander' when installing the product. This is easiest when fixing the screws as close to the glass as possible.
5. Secure the TEC B screws in the suggested locations either side of the raised profile on the back of the Window Pod®.
6. If your Window Pod is carpeted, we recommend blind fixing the 19mm screws (SCREW C). To do this simply make a small incision in the carpet on the face of the Window Pod using a retractable utility blade and peel a small section of carpet back before fixing the screws in the suggested locations.
7. If necessary, tighten up all fixings until the washer is touching the plastic of the Window Pod® and secure the provided screw caps.

TEC B x2  SCREW C x2 



Please take care when drilling through the steel of your vehicle paying particular attention to any **hidden electrical wires**. Vanshades cannot be held responsible for any damage to your vehicle as a result of installing Window Pods.

**VANSHADES**

Unit 16 Claycliffe Business Park, Cannon Way, Barugh Green, Barnsley S75 1JU

+44 (0)1226 872330

info@vanshades.co.uk

 vanshades  vanshades

**AS INDIVIDUAL  
AS YOU ARE**